

We make sure



# **NVIDIA GeForce 8400GS**

Quick User Guide

---

# Contents

- 1. Connecting one or more monitors ..... 1
- 2. Connecting analogue TV ..... 2
- 3. Managing multiple monitors / TV ..... 3
- 4. Troubleshooting Tips ..... 6

---

# 1. Connecting one or more monitors

PC Connector

Cable

Monitor Connector



DVI-DVI Cable  
(Included with the monitor  
or optional)

DVI



DVI-VGA  
Adaptor  
(optional)

VGA-VGA Cable  
(Included with the monitor  
or optional)

VGA

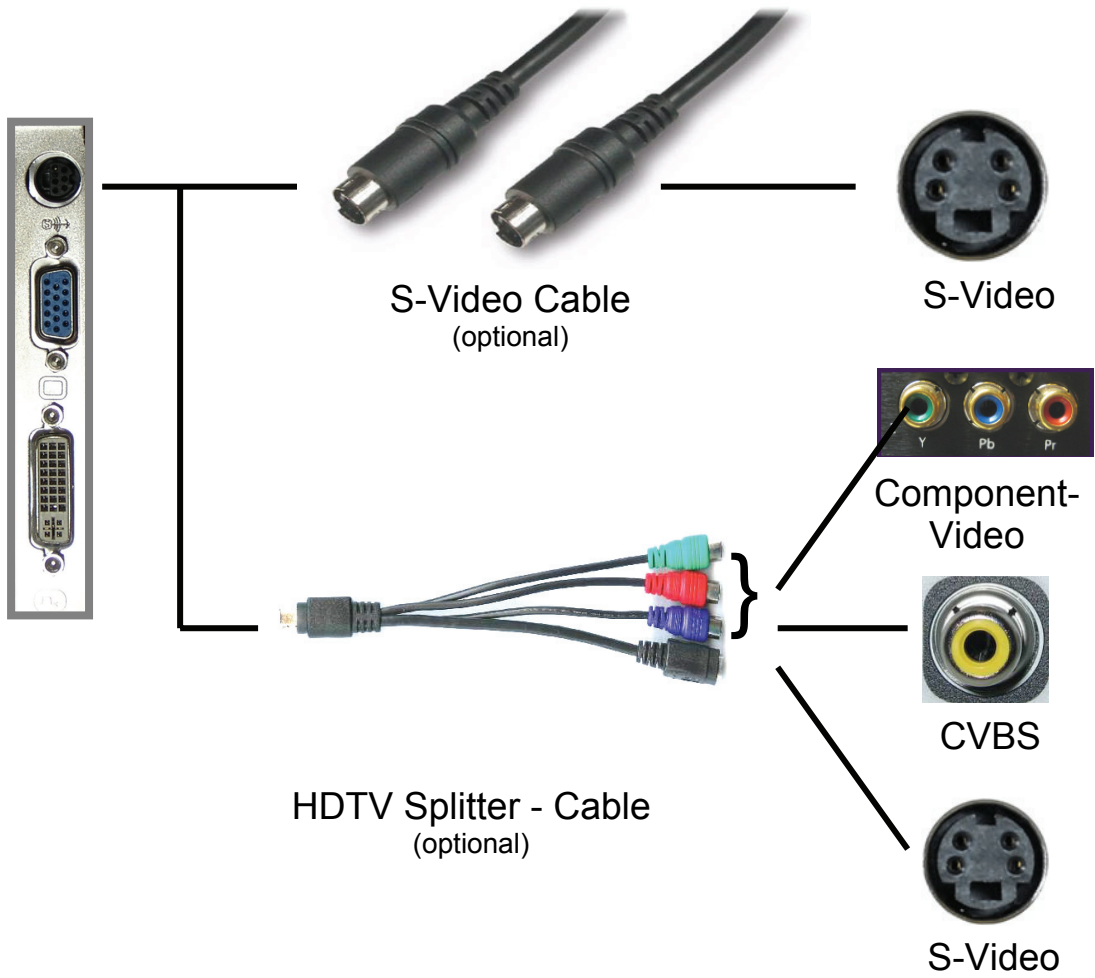
---

## 2. Connecting analogue TV

PC Connector

Cable

Monitor Connector

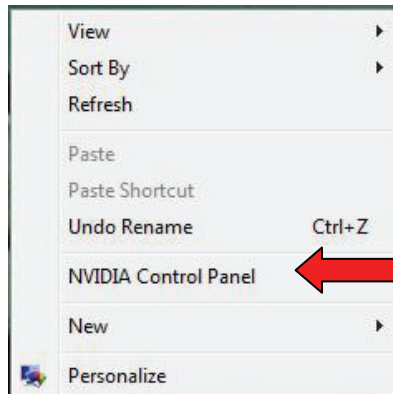


---

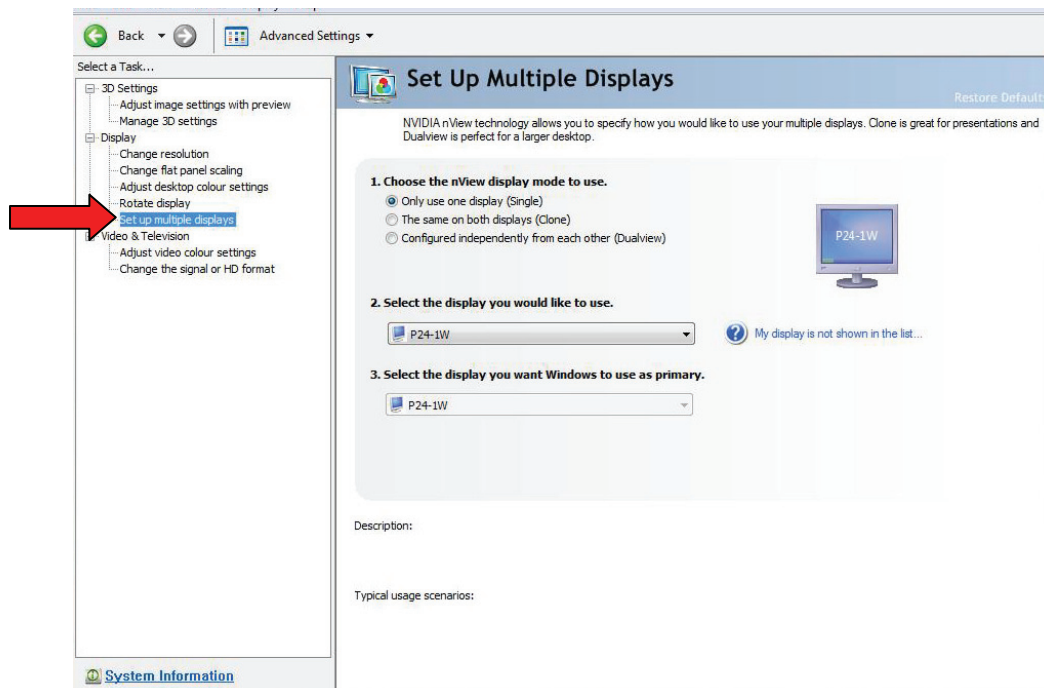
### 3. Managing multiple monitors / TV

The following steps will help you to manage multiple monitors or TV connected to your PC.

1. Move the mouse cursor onto the desktop and do a **right click**. The following window will open up:

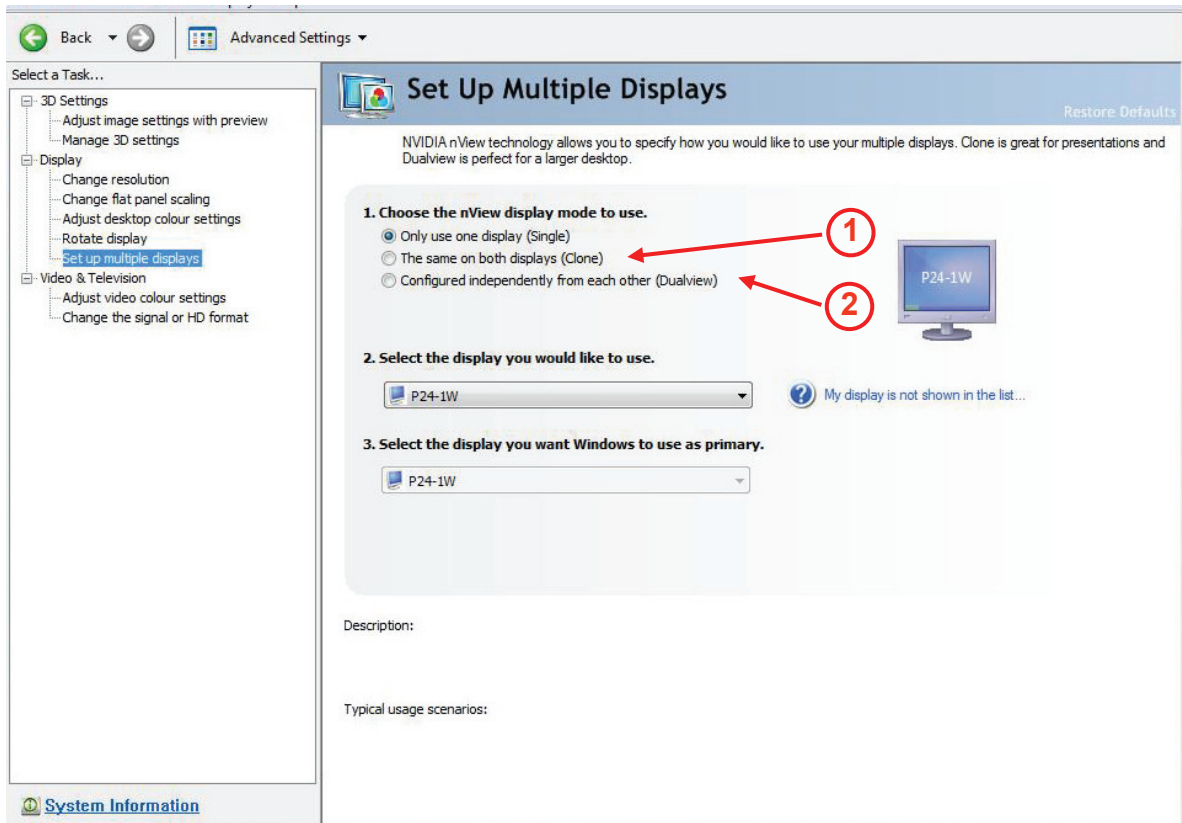


2. Select the **NVIDIA Control Panel**. The following window will open up:

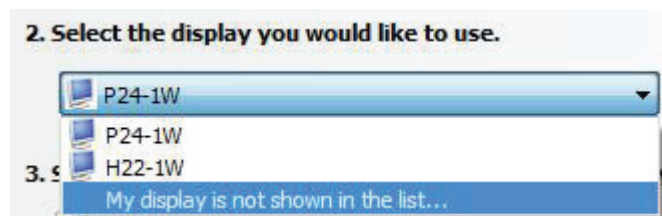


3. Select **Set up multiple monitors**.

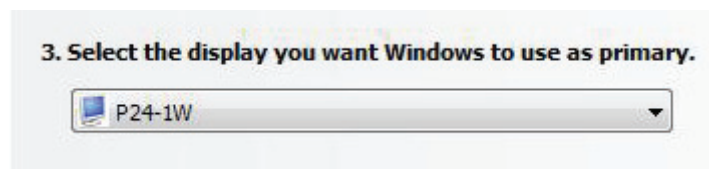
4. In the following window you can select between the same content on both displays (Clone) -> 1 or independent content to two displays (Dualview) -> 2 by using the extended desktop:



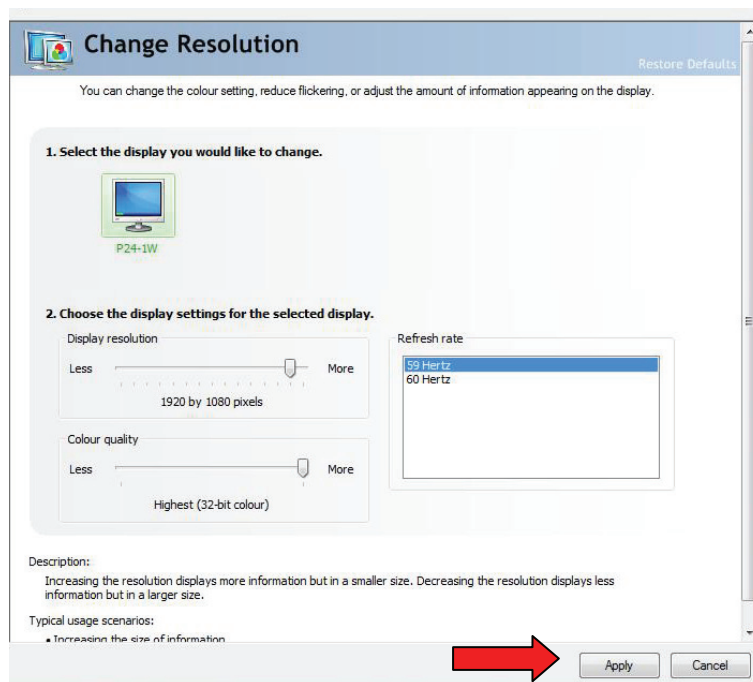
5. Select the second monitor / TV:



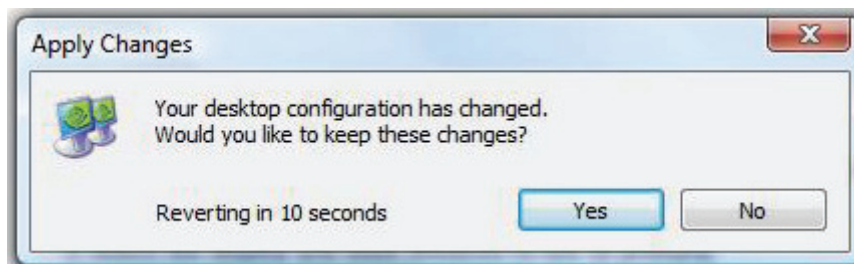
6. Did you decide for independent content on two displays (Dualview) -> 2 (see above) you need to decide in the following dialogue box which monitor/TV will be the primary display.



7. Confirm your inputs with **Apply**.



8. Confirm your inputs again with **Yes**.



---

## 4. Troubleshooting Tips

The following troubleshooting tips may help if you experience problems. Contact your dealer for more advanced troubleshooting information.

- Check that the card is seated properly in the slot.
- Ensure that display cable is securely fastened to the card's display connector.
- Make sure that the monitor and computer are plugged in and receiving power.
- If necessary, disable any build-in graphics capabilities on your motherboard. For more information, consult your computer's manual.
- Make sure you selected the appropriate display device and graphics card when you installed the VGA driver.
- For more assistance, use the Troubleshooting Guide located in the Windows®-Help or contact our support centre.